

F A R O
BARCELONA




easy
Refs. 33415, 33416



IMPORTANT!

	Tools Required 	
	Installation Options 	

FORBIDDEN

- 1- Protection class: I: The fitting has an earthing connection: The earth wire (yellow/green) has to be connected to the clip marked with .
- 2- This fitting should only be installed in rooms where direct contact with water is impossible.
- 3- Reverse function.
- 4- Consumption in W, according to the speed of the motor.
- 5- Revolutions per minute.
- 6- Light source, not included.
- 7- Remote control, included.
- 8- This device can be used by children aged 8 years or more and people with physical, sensory, or mental small capacities if they have been given supervision or adapted training. The children must not play with the fans. The cleanliness and the maintenance must be done by an adult.

WARNINGS

Read the entire booklet carefully before beginning installation and save these instructions. To reduce the risk of personal injury, attach the fan directly to the support structure of the building according to these instructions, and use only the hardware supplied. To avoid possible electrical shock, before installing your fan, disconnect the power by turning off the circuit breakers to the outlet box and associated wall switch location.

For the electrical connection, it is necessary to incorporate an isolator switch according to the installation regulations, which ensures all-pole cut, is directly connected to the power terminals and it must have a contact separation in all its poles, which provides total disconnection under category III surge conditions.

All wiring and connections must be made following national and local electrical codes. If you are not familiar with the way to do the electrical installation, you must use the services of a qualified electrician.

Make sure that the fan is disconnected from the mains before removing the protection. To reduce the risk of personal injury, do not bend the blade attachment to the system when installing, balancing, or cleaning the fan. Never insert foreign objects between rotating fan blades.

To reduce the risk of fire, electrical shock, or motor damage, do not lift or carry the fan by the lead wires.

The fan blades cannot be installed lower than 2.3 m from the floor.

The important precautions, safeguards, and instructions appearing in this manual are not meant to cover all possible conditions and situations that may occur. It must be understood that common sense, caution, and carefulness are factors that cannot be built into this product. These factors must be supplied by the person(s) installing, caring for, and operating the unit.



Tools and materials required

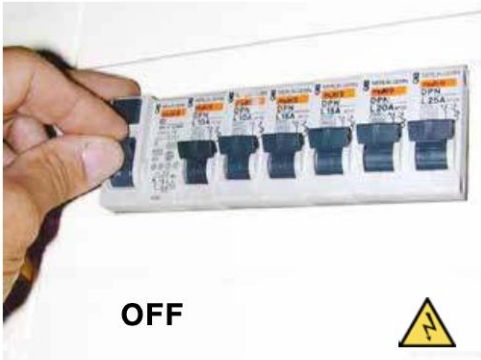
Verify you have all parts before beginning the installation. Check the foam insert closely for missing parts. Remove the motor from packing. To avoid damage to the finish, assemble the motor on a soft padded surface or use the original foam insert in the motor box. Do not lay the fan on its side as this could result in shifting of the motor in the decorative enclosure.

How to install the fan

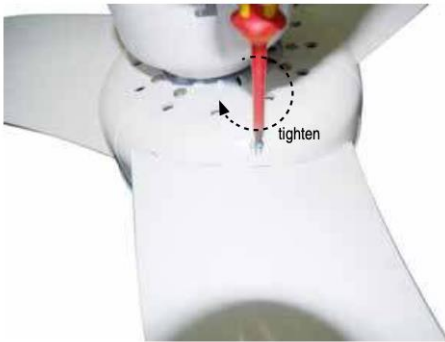
1



3



2



4



5

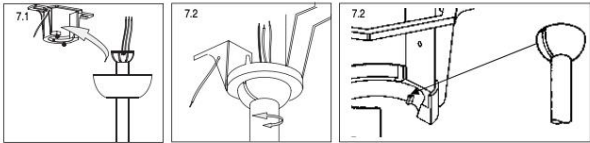


6

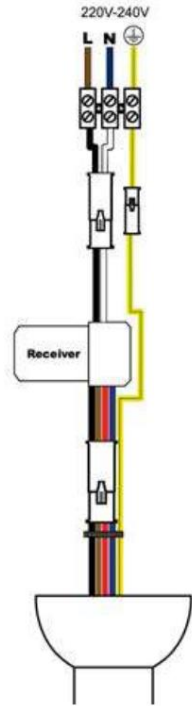


ASSEMBLE THE BLADES
Make sure the screws are tightened.

7



8



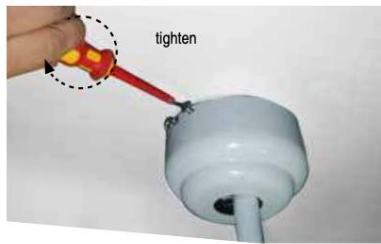
(i)

L – brown

N – blue

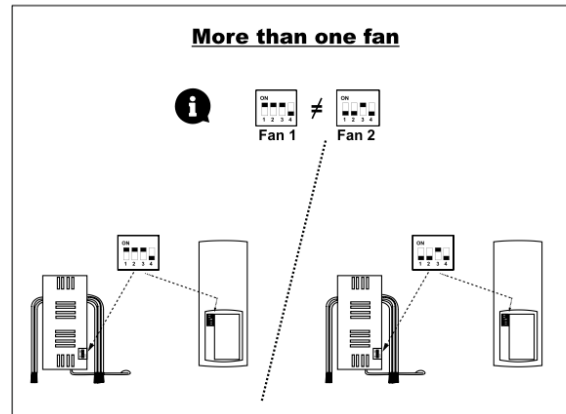
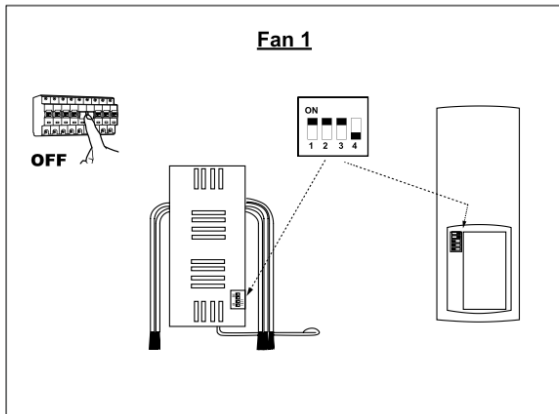
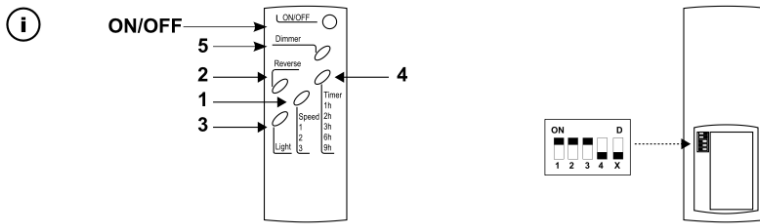
⊕ yellow-green

9



Place the fan.
 ASSEMBLY THE CANOPY Make sure the screws are tightened.

Remote control



1

Speed
1
2
3

1= for high fan speed
2= for low fan speed
3= for medium fan speed

2

Reverse

Winter-summer function

3

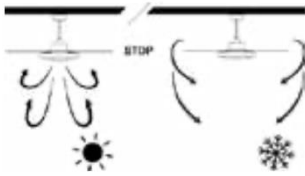
Light

Turn the light ON/OFF

4

Timer
1h
3h
6h
9h

With programmer: It will work for **1 hour, 3 hours, 6 hours, and 9 hours**



The reverse switch for hot or cold weather depends on factors such as the size of the room, height of the ceiling, number of ceiling fans, etc. The reversing switch controls the direction of the fan.

Hot weather/downward –The fan will turn in a counterclockwise direction. A downward air circulation creates a cooling.

This allows you to regulate the air conditioner to a higher temperature without affecting your comfort.

Cold weather/upward – The fan will turn in a clockwise direction. An upward air circulation will distribute the warmer air trapped at the ceiling around the room without causing a draft. This allows you to regulate the heating to a lower temperature without affecting your comfort.

MAINTENANCE

1. As fans tend to move during operation, some connections may loosen. Check the supporting screws, brackets, and blade attachments twice a year to ensure that they are secure.
2. Cleaning the fan helps to maintain its appearance for years. Do not use water when cleaning. This could damage the motor or the blades and could cause electrocution.
3. Use a soft brush or lint-free cloth to prevent scratching the surface.
4. There is no need to oil the motor as the bearings are permanently lubricant.

TROUBLESHOOTING GUIDE

The fan does not start

1. Check the fuses and circuit breakers.
2. Review the connections of the terminal block according to the indications in the installation. Ensure the power is off before doing this.
3. Make sure that the sliding switch is firmly in the position of up or down. The ventilator does not work when the button is in the middle.
4. Make sure that the stabilizing tongue pieces of the motor are off.
5. Finally, if the fan will not start call an electrician do not attempt to touch the internal parts.

The fan is noisy

1. Check that the screws in the motor casing are attached correctly.
2. Check that the screws fastening the blade brackets to the engine block are properly tightened.
3. If using an optional light fitting, ensure the glass is properly fitted and/or the screws holding the glass are firm.
4. If a solid-state speed control has been fitted this can cause noises in the motor do not use this control.
5. Allow at least 24 hours for the fan to settle, as much noise will go away. Each blade set is weighed and is a complete set, if installing more than one fan do not mix the blades as this can cause wobble.

The fan oscillates

1. Check the blades are securely fastened to the holders.
2. Check the blade holders are tight on the motor
3. Ensure the mounting bracket is properly screwed to the ceiling.
4. Interchange opposite blade sets if need be

In general, the wobble is caused by the blade not cutting the air at the same point measure down from the ceiling and make sure each blade is at the same height as the ceiling, if they are not a small adjustment can be made by hand by slightly bending the blade and bracket. If a major adjustment is needed insert a washer (not provided).

The light does not ignite

1. Check the terminal connections are tight.
2. If the light is still not working contact an electrician.

Guarantee

In Compliance with General Law 23/2003 & R.D.L. 1/2007. CONDITIONS

If any of the parts of your ceiling **fan** other than the motor's is faulty at any moment within the 2 years since its purchase date due to an original material defect or manufacturing, the replacement of the part or its repair will be completely free of charge

If the **motor** of your ceiling fan is faulty at any moment within the **15 years** since its purchase due to an original material defect or manufacturing, the replacement of the part or its repair (we will consider it) completely free of charge for the part or the work carried out, as long as the part is delivered in its original package together with all its accessories.

If the reparation should fail to satisfy the customer and/or the object fails to present the optimum condition for the use to which it is destined the guarantee holder will have the right to the substitution of the acquired item for another of identical characteristics.

This warranty policy is subject to the conditions set forth on the manufacturer's website www.faro.es under '**Warranty**'. Do not install the product if it is damaged. This lighting was properly packed in such a way that its smaller parts could not get damaged during its transport. Inspect everything to confirm that nothing was damaged.

We reserve the right of our specialists to study each product returned, leaving the warranty exempt in case of demonstrating that the incident or failure has been caused by the user, due to installation problems or elements unrelated to the product.

A representative of the manufacturer will have access to the defective products.

This warranty does not cover labor costs for the disassembly of the Products.

If the manufacturer chooses to replace a defective product but cannot do so, because it is not manufactured or is no longer available, the manufacturer may replace the product with a comparable product (whose design or specifications may vary slightly). The replacement will be effective only for the damaged unit.

This limited warranty shall only be valid when the product has been properly installed, and connected and is functioning with the correct electrical values, operating range, and at the environmental conditions outlined in the technical specifications, according to the guidelines, instructions, IEC standards, or any other document supplied with the Products.

The manufacturer is not responsible for the electrical power supply conditions, including the voltage surges, the voltage fluctuations, the control systems for power waving that exceed the specified limits of the products, and those defined in the relevant supply rules.

This warranty is not valid for damages or malfunctions due to force majeure or any type of fraudulent, incorrect use, misuse, anomalous use, or use that violates the rules, codes, or the corresponding instructions of use, including without limitation the contents regarding the latest safety rules, as well as the latest industry and/or electricity regulations in the relevant regions.

The maintenance of the product must be carried out according to the instructions and by specialized personnel only.

An adequate record of the operating history must be kept at the disposal of the manufacturer to be inspected at any moment.

If it is determined that a product is defective or does not function following the product specifications, the buyer must notify the manufacturer in writing.

All warranty periods mentioned are subject to a representative of the manufacturer being able to access the defective product or system to check such non-conformity. The warranty claims must be notified and sent to the manufacturer's regional office within 30 days of such indication, and at least the following information must be specified (additional information may be requested):

- Defective products. For the guarantees of a System, other components that are used must also be specified.
- Date of installation and invoice date.
- A detailed description of the problem, the amount, and the percentage of malfunctions, together with the fault date code.
- The application, the functioning hours, and switching cycles.
- When the warranty claim is justified, the manufacturer shall bear the transportation costs. The manufacturer may invoice the client for the returned products that are not defective or nonconforming, together with the associated transportation, verification, and handling expenses. This warranty does not cover:
 - Any exposure to corrosive environments or aggressive gases of chemical origin.
 - Negligent, improper or inappropriate use.
 - Use of the product at a different environmental temperature than the one specified.
 - In LED light sources, faults smaller than 0.2% for every 1000h.
 - Decrease of luminous flux of less than 30% in LED light sources.
 - Relative humidity in the installation above 80%, or if the conditions have been exceeded according to the IP rating of the product for which it was designed.